

It's About **SAVINGS**

SAVING LIVES

“My youngest was 11 months old and my oldest was around seven or eight years old. They called 9-1-1 and told the operator, ‘Mom’s dancing in bed,’” said Kuakini Volunteer Cheryl Mitsuka. Cheryl had suffered a seizure, possibly brought on from a cold she had caught from her children. The ambulance brought her to Kuakini Medical Center where she remained in a coma for three days. “The doctor told my husband to tell the girls that I was not going to survive. When I came out of the coma, I had to relearn everything.”

It has been about 30 years since Cheryl survived her first seizure and there have been more since then. She experienced memory loss after waking from her coma, an affliction she still copes with today. “I lost a lot of friends,” said Cheryl. “They would get frustrated with me. I would wake up and (go to) visit someone and learn they were not there any more. My kids had to show me pictures. That’s how I got my memory back.”

Her family has been a great support system since her health scare. Cheryl’s world changed forever the day her daughters called for help, but many aspects of her life have remained the same, including her compassionate and energetic nature. “I’m gasagasa.



I can’t stay still. I love to help total strangers,” said Cheryl. She even aspired to be a missionary.

Cheryl can now remember sneaking out of her home in St. Louis Heights as a child to catch the bus and visit disabled and elderly patients at hospitals such as Kuakini. She often had to visit many of her own family members who had fallen ill. “My family was always in the hospital. I would hear people grumbling about having to visit people at the hospital and I thought that was so mean,” Cheryl said.

Today, Cheryl no longer sneaks out of the house – her husband willingly gives her a ride. For nearly seven years, Cheryl has been volunteering several times a week to work with Kuakini’s long-term care residents in Hale Pulama Mau. She admits that at times it can be emotional, since she can empathize with them. “They can be so frustrated.

I know how it is,” she said. “I pray that I say the right things to them – show them they are loved. It’s hard to leave them when I have to go home.” Cheryl understands their aggravation in coping with age-related memory loss. When she awoke from her coma 30 years ago, she could not recognize her husband and confused him for a physician.

(continued)

Dear Friends of Kuakini:



For more than a century, Kuakini Health System has been committed to delivering high quality health care services, helping to save lives, and providing assistance to the Hawaii community. In 1899, a diverse group of community organizations and individuals worked with the Japanese Benevolent Society to raise funds to establish the Japanese Charity Hospital. Today, Kuakini serves the health care needs of adults and older adults of all ethnicities and is fortunate to receive continuing

support from its donors and volunteers.

Kuakini's reputation as a trusted health care organization in Hawaii is greatly dependent on its loyal patients and residents and the generosity of countless friends and supporters. We are sincerely grateful for the generous contributions that have helped to finance new medical technology and facility renovations.

This year, Kuakini Foundation is continuing to fundraise for planned facility modernization projects, which include the installation of two new emergency generators for the Medical Center and renovation of the Makai 4 patient rooms and nurses station. These projects will help to

strengthen Kuakini's disaster preparedness capabilities and improve the comfort for patients and provide great customer experience. Also, Kuakini Foundation will continue the fundraising campaign for Kuakini's new Research Building due to the unexpected project cost estimates.

Thank you for your ongoing support of Kuakini. Please feel free to call Kuakini Foundation at 547-9296 if you have any questions or would like more information on Kuakini's fundraising initiatives.

*Gary K. Kajiwaru
President and Chief Executive
Officer
Kuakini Health System*

SAVING LIVES *(continued)*

It might be her compassion or talent for empathy, but Cheryl loves volunteering with Kuakini's residents. "When you see them smile – any response – I feel it in my heart. And I have tears in my eyes. I understand when they get frustrated. When they laugh, I laugh. When they're in pain, I feel their pain," she said. "My friends ask me why I don't want to do this and that with them. I say, 'No, I want to come here (to Kuakini).'"

Cheryl has been on a long journey. She has undergone brain surgery and worked with many specialists. She continues to work on her memory, coordination and blood pressure. The obstacles that she has overcome and those that she continues to face are a direct result of her strong will and support from her family, friends and medical team. Today, Cheryl looks forward to enjoying the beautiful view from her home and interacting with as many people as possible. "My physicians here saved my life. The therapists uplifted me. They all really helped me."

Kuakini Health System Board of Directors

- James Yasuda, Chair • Satoru Izutsu, Ph.D, Vice Chair
- Alan Tamayose, Secretary • Joji Seta, Treasurer • J. David Curb, M.D. • Chuck Gee • Don Kim • Paul Kosasa • Kamal Masaki, M.D. • Nancy Shimamoto • Arthur Yamamoto
- Gary Kajiwaru, Ex-Officio

Kuakini Foundation Board of Directors

- Nancy Shimamoto, Chair • Leslie Hidaka, Secretary-Treasurer
- Karen Kuraoka • Joichi Saito • Gary Kajiwaru, Ex-Officio

Kuakini Foundation

Kuakini Foundation is a 501(c)(3) non-profit charitable organization established to manage and coordinate the fundraising activities of Kuakini Health System and its subsidiaries. Kuakini Health System is the parent company of Kuakini Foundation, Kuakini Medical Center, Kuakini Geriatric Care, Inc. and Kuakini Support Services, Inc.

All monetary donations received by Kuakini Foundation are used to help finance the purchase of high-tech medical equipment, facility renovations, and other capital improvement projects such as the construction of the new Research Building, which will improve and expand the quality of health care programs and services provided to the community. Donations received by Kuakini Foundation and its affiliates are not used for operational costs such as employee salaries and benefits, and supplies.

MORE SLICES AND LOWER RADIATION EXPOSURE

KUAKINI'S NEW CT SCANNER

In December 2010, Kuakini's new 64-slice GE Lightspeed® VCT XTe CT (computed tomography) scanner replaced the former eight-slice model. The new scanner produces more cross-sectional images (slices) and produces a better view of the inner body than its predecessor. For example, the more you slice into a watermelon, the easier it is to locate the seeds. Just like the watermelon slices, the more image slices produced by a CT scanner, the better physicians can identify problem areas in the body.

Kuakini's new CT is the first in Hawaii to utilize ASiR™ (Adaptive Statistical Iterative Reconstruction) technology that dramatically reduces a patient's radiation dose by up to 40 percent without compromising the image quality of the scan. This new technology also

provides more in-depth brain and cardiac techniques that result in more reliable scans and enables physicians to have more confidence in their diagnosis.

"Our new CT scanner complements and extends the range of quality diagnostic services that we can offer to our patients at Kuakini," said Scott Lopes, Interim Manager, Imaging Services and Manager, Radiation Therapy. "The ASiR technology provides a higher level of diagnostic confidence with a significantly lower radiation dose."

CT combines a series of X-rays from different angles to produce sliced images of the bones and soft tissues in the body. As with any X-ray, the patient receives a dose of radiation during their scan. In the past, a higher dose of radiation resulted in higher image quality of a CT scan. However, for Kuakini, the new ASiR software maintains excellent CT image quality



while reducing the radiation exposure to the patient.

CT is a common diagnostic exam utilized when people are injured or when a physician suspects a medical problem that is not easily detectable with a physical examination. It is often used to diagnose different types of cancers, as it helps the physician identify a tumor and its location as well as measure its size. In trauma cases, CT scans can quickly identify injuries to internal organs.

Before the new CT scanner could be installed, the old scanner was disassembled and removed from Imaging Services. The room was then renovated to accommodate the new equipment. In the event of a power outage, Kuakini is one of three Hawaii hospitals that can continue its CT services with backup emergency generator power.

please cut along the dotted line

It's About SAVINGS

I would like to designate my gift to support:

- New Emergency Generators Facility Renovations/ Purchase of New Equipment
 New Research Building - Interior Development

Name: _____ Phone: _____

Address: _____ City: _____ State: _____ Zip: _____

I would like to make a donation in the amount of: \$ _____

Payment by: Check (Please make check payable to Kuakini Foundation)

Credit Card

Please charge my: VISA MasterCard Diners Discover
 American Express JCB

Card number: _____ Expiration Date: _____

Cardholder's signature: _____ Date: _____

Thank you for your support! Contributions are tax-deductible if you itemize.

No goods or services have been given in return for this contribution.

Kuakini Foundation EIN:
99-0225067

SAVING ENERGY AND REDUCING MAINTENANCE COSTS

Last year, Kuakini Foundation launched fundraising efforts for the renovation of the Makai 4 patient rooms and nurses station. Thanks to the donors' initial support, the first phase of the project was completed in April 2011 with the replacement of patient room windows.



Kuakini will be planning for the similar replacement of the Makai 5 patient room windows. The new windows are:

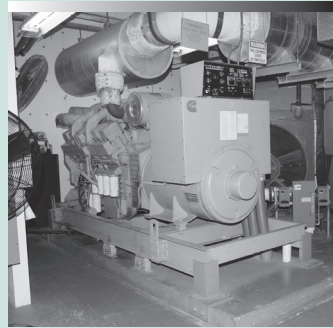
- Double insulated from outdoor heat and thereby reduces air conditioning usage and electrical consumption
- Sealed to reduce outside noise
- Easier to maintain with shorter and tapered exterior ledges to prevent birds from nesting



A renovated Makai 5 patient room

The second phase of the Makai 4 renovation project will include the modernization of the patient rooms with new energy efficient fixtures, remodeled bathrooms, upgraded bedside headwalls, and new interior finishes.

SAVING FOR A RAINY DAY



One of Kuakini's existing emergency generators.

Thunder storms and heavy rains have been known to disrupt electrical services in our islands. Power outages can severely impact hospital operations and operations of the long-term care facilities. For this reason, Kuakini maintains an emergency generator system for emergency situations resulting from natural disasters

and unplanned events. Essential medical equipment receive power from specially marked electrical outlets designated by red faceplates, which will automatically switch to emergency generator power in the event of an outage.

Kuakini proved its emergency preparedness in December 2008 when Oahu experienced a blackout that left parts of the island without electricity for several days. When the power went out, Kuakini transitioned to emergency generator power without disruption to hospital and long-term care services as well as to other support services such as the research storage freezers containing priceless research specimens.

In order to increase Kuakini's capabilities to withstand future emergency situations, Kuakini Foundation will continue fundraising for the installation of two new emergency generators that will provide backup power for the Medical Center. The Medical Center's current emergency generator must be replaced due to its age and power capacity, and also to comply with new health care standards. The new health care standards recommend that hospitals have sufficient emergency electrical power and dedicated fuel for the emergency power system to last for at least 96 hours.